

CASITA CORTEZ

An exciting new signature home neighborhood has just been released. Casita Cortez is a collection of 31 two-bedroom homes priced from the \$350's. With spacious living areas, outdoor courtyards and well-appointed interior finishes, Casita Cortez is the perfect entry level home at Loreto Bay. For more information contact us at info@loretobay.com or 604.648.6684

Features

- Fully Furnished
- 2 Bedrooms
- 2 Baths
- Outdoor Dining Court
- Main Floor Laundry
- Optional Viewing Tower
- Large Outdoor Living Space

MAIN FLOOR: 782 SQ FT
(Enclosed Space)

SECOND FLOOR: 308 SQ FT
(Enclosed Space)

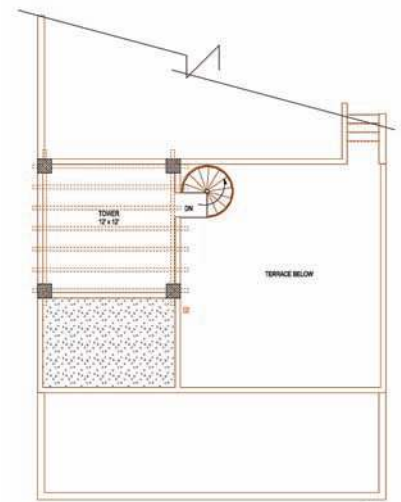
TOTAL: 1090



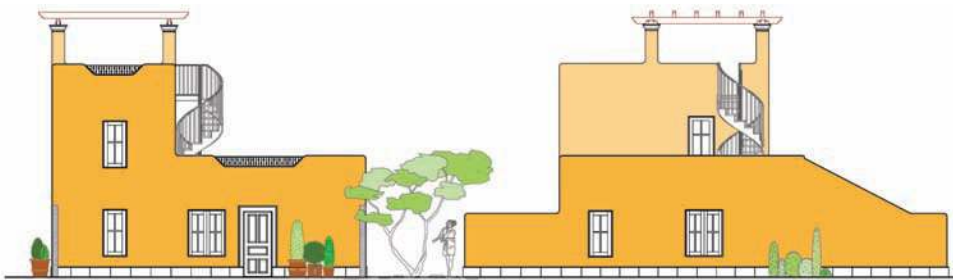
Main Floor Plan



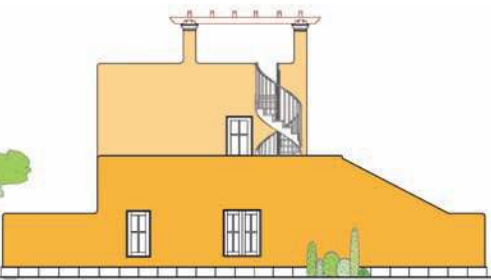
Second Floor Plan



Optional Tower Plan



Elevation 1



Elevation 2



Elevation 3

Agua Viva * CASITA CORTEZ PLANS AND ELEVATIONS * DRAFT

The Developer reserves the right to change floor plans, elevations, specifications and pricing without notice or obligation. All floor plans are for illustrative purposes. All floor plans, maps, landscaping, and elevation renderings are artist's conceptions. Not all plans are to scale. All square footages could change and are approximate.

CASITA CORTEZ



LOT TYPE BREAK OUT

31 TOTAL LOTS

● 33'- 6" x 50'- 7"	(23)
● 33'- 6" x 50'- 7" Irregular	(3)
● 33'- 6" x 41'- 0"	(1)
● 33'- 6" x 41'- 0" Irregular	(2)
● 41'- 0" x 40'- 0"+ Irregular	(2)